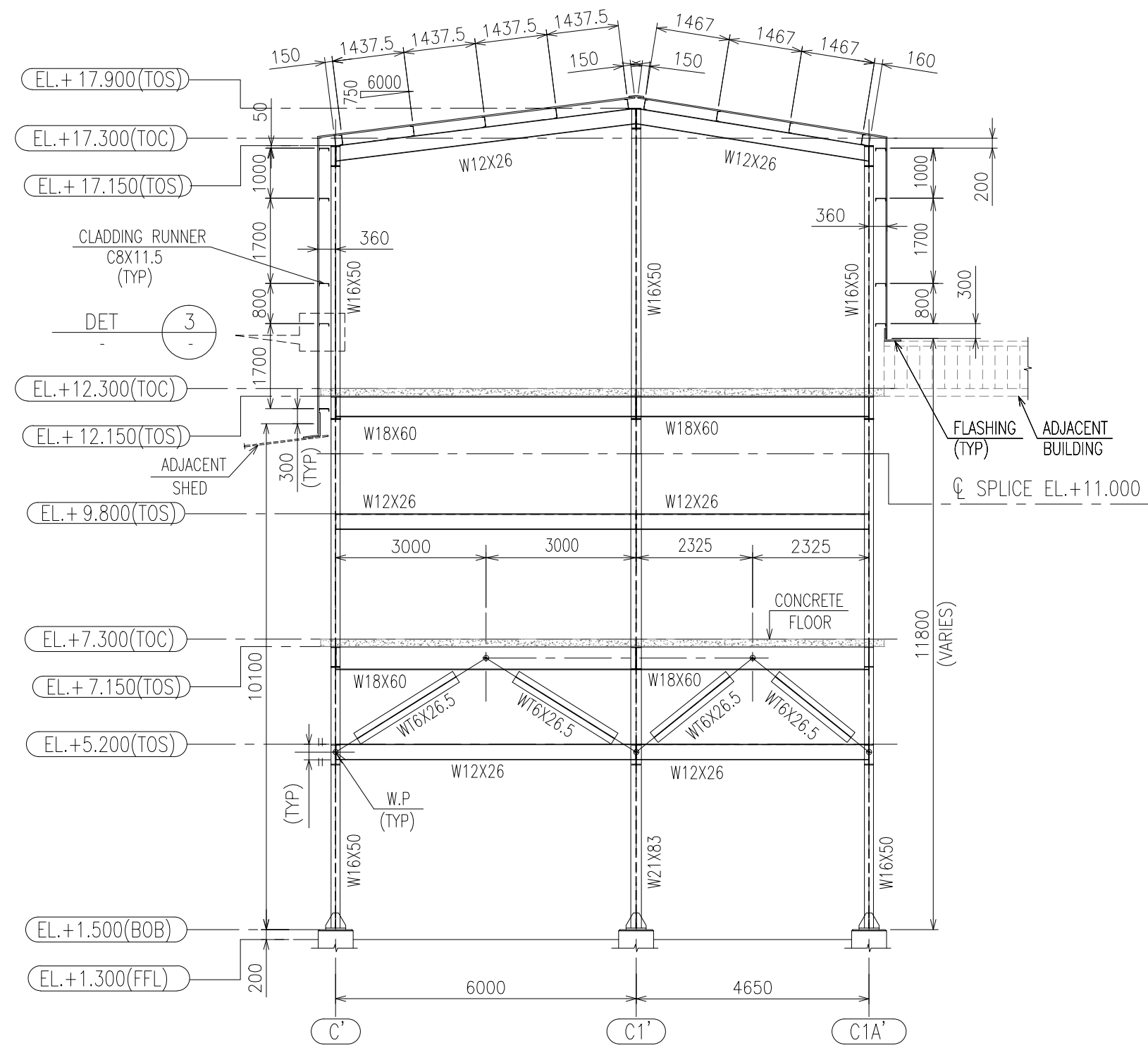
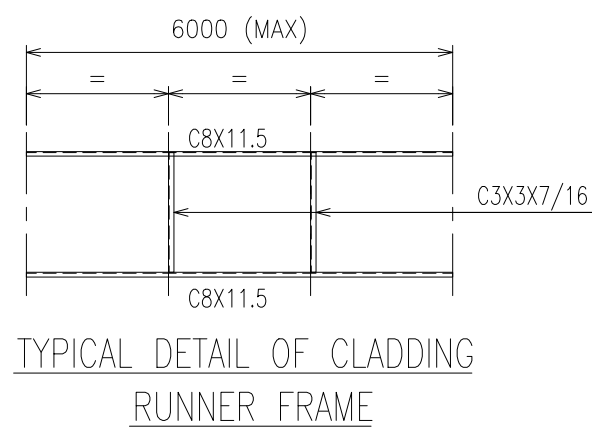


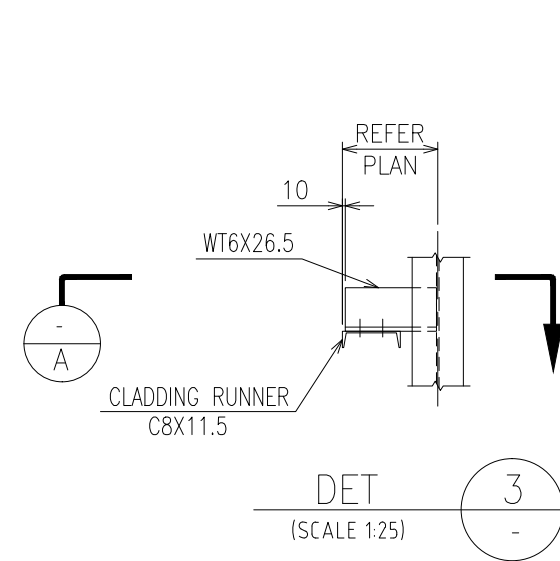
ELEVATION ON GRID 10A



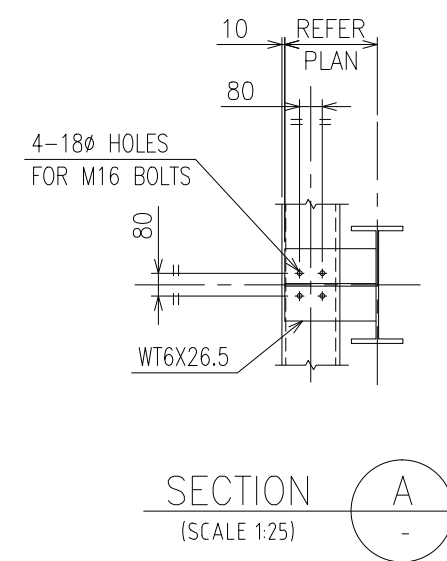
ELEVATION ON GRID 10B



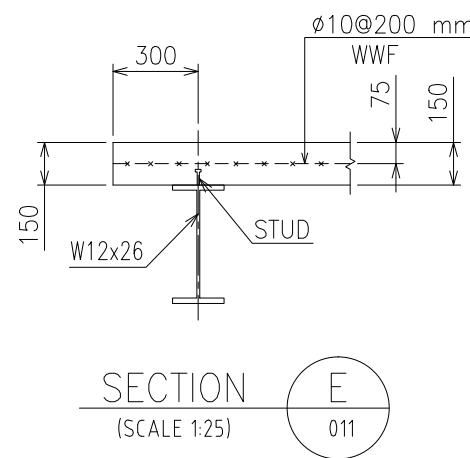
TYPICAL DETAIL OF CLADDING
RUNNER FRAME



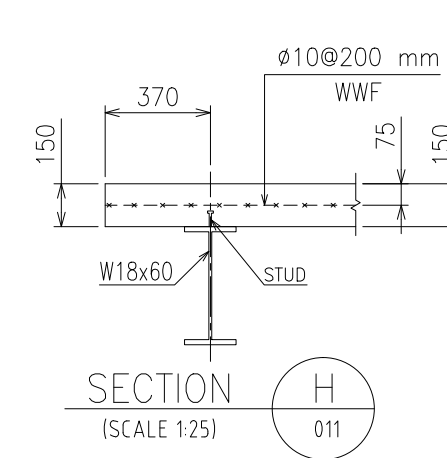
DET 3
(SCALE 1:25)



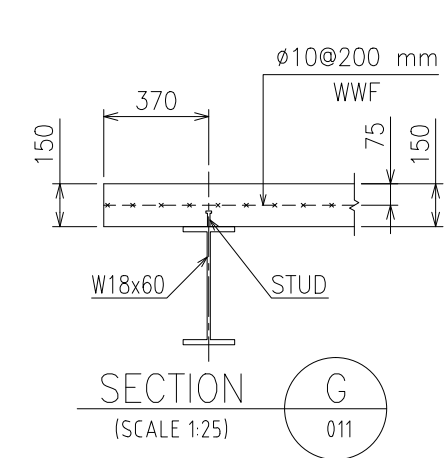
SECTION A
(SCALE 1:25)



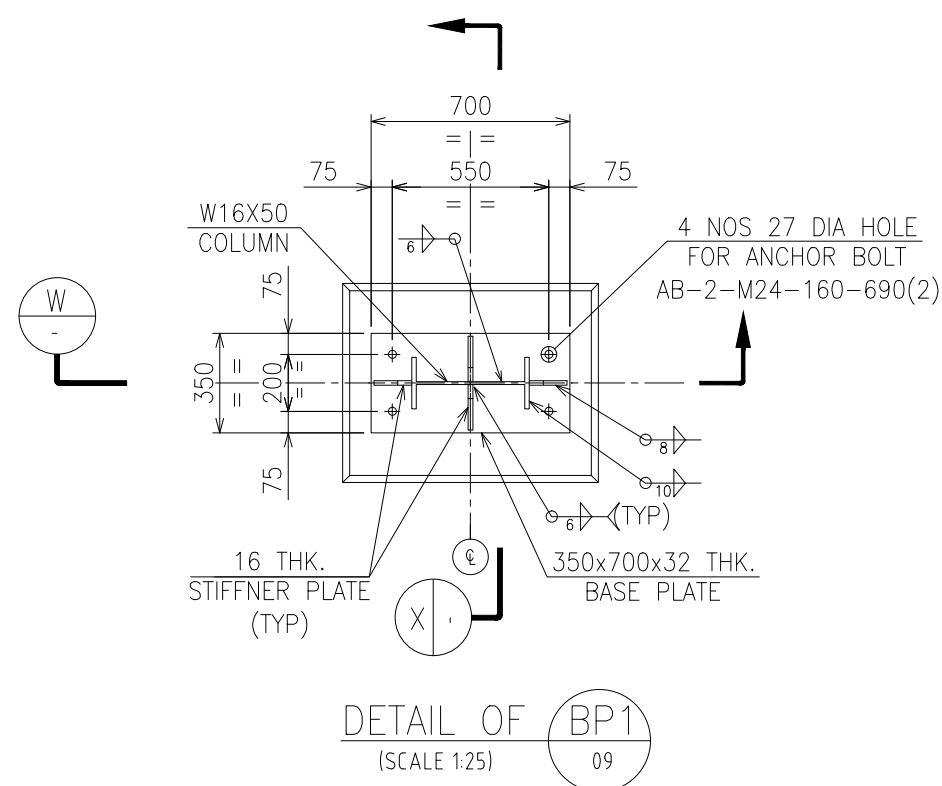
SECTION E
(SCALE 1:25)



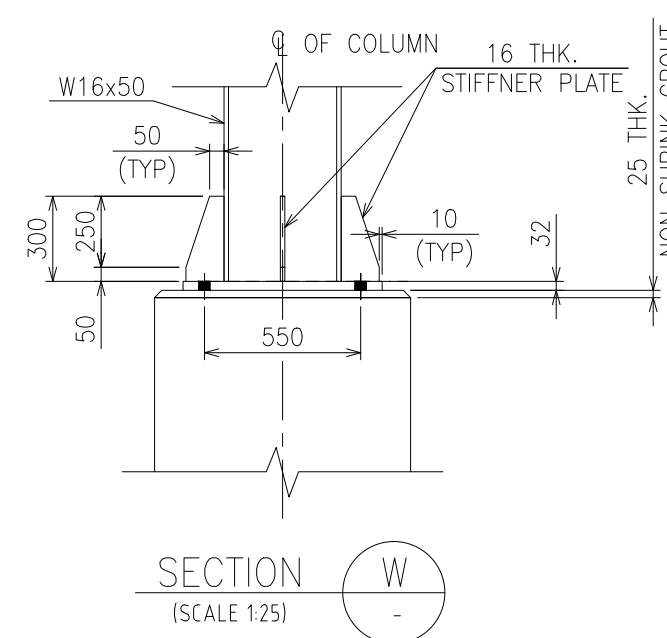
SECTION H
(SCALE 1:25)



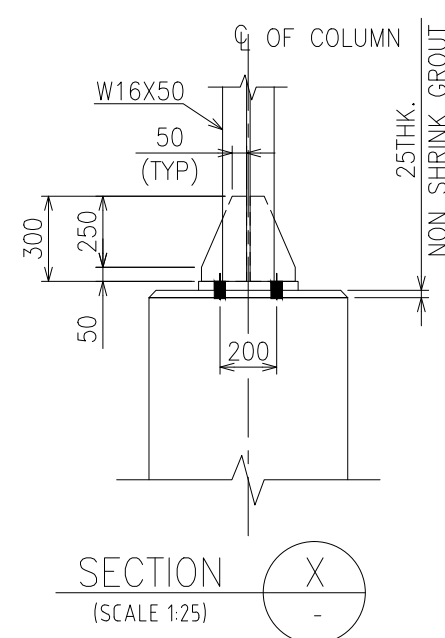
SECTION G
(SCALE 1:25)



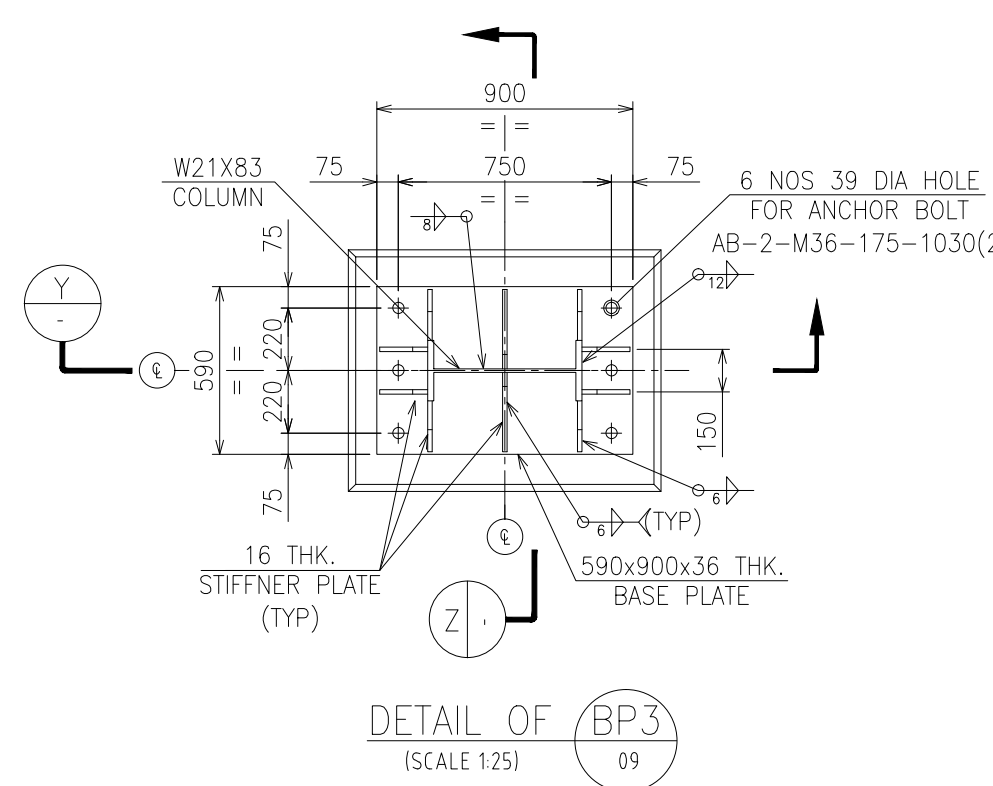
DETAIL OF BP1
(SCALE 1:25)



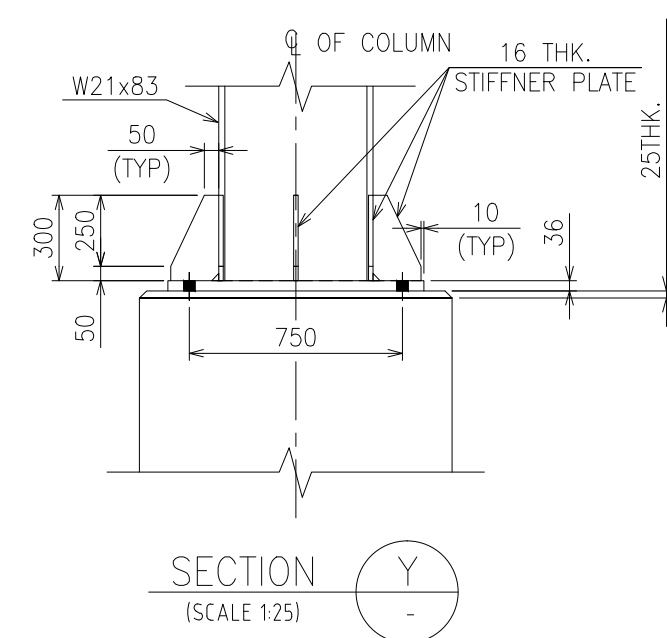
SECTION W
(SCALE 1:25)



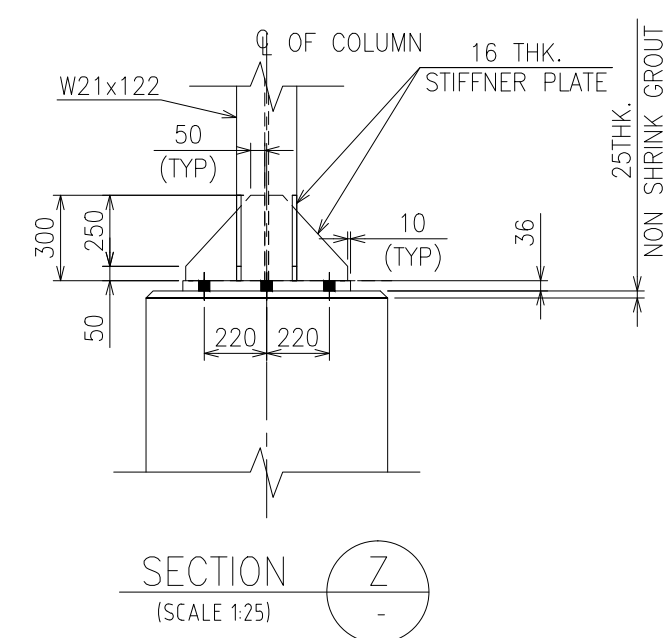
SECTION X
(SCALE 1:25)



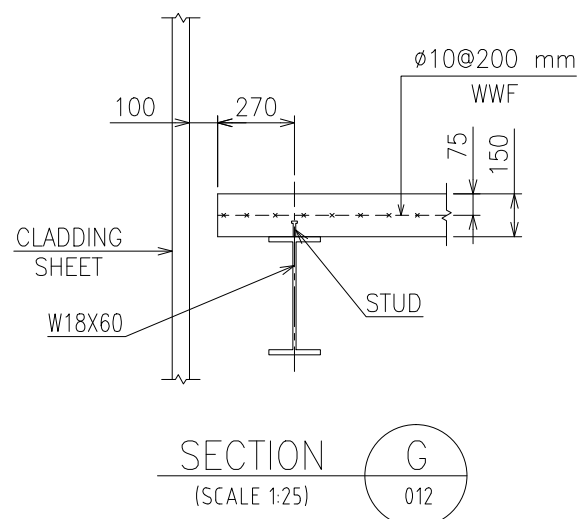
DETAIL OF BP3
(SCALE 1:25)



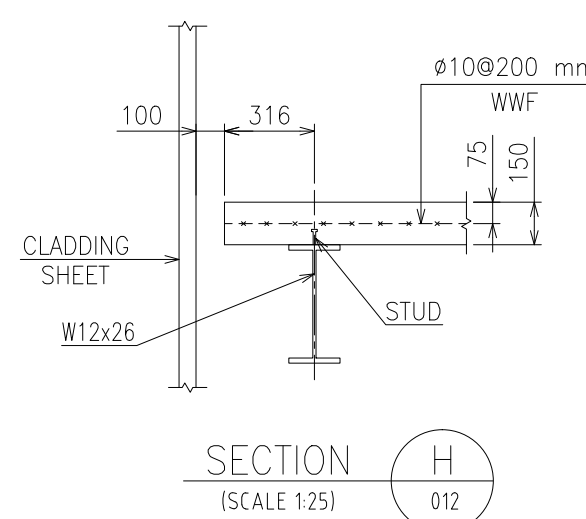
SECTION Y
(SCALE 1:25)



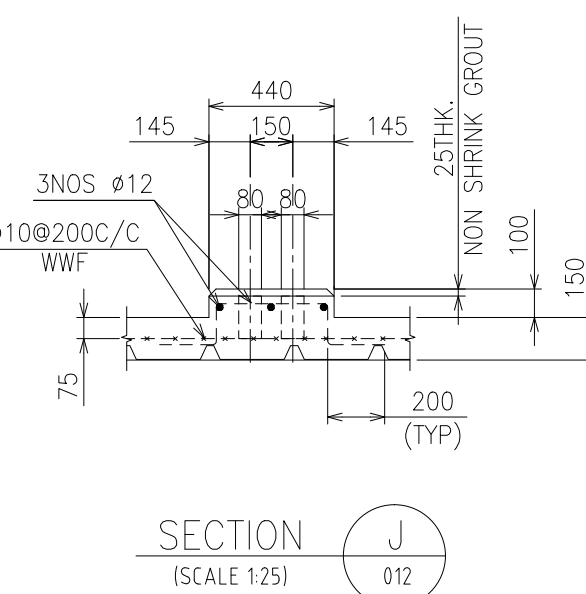
SECTION Z
(SCALE 1:25)



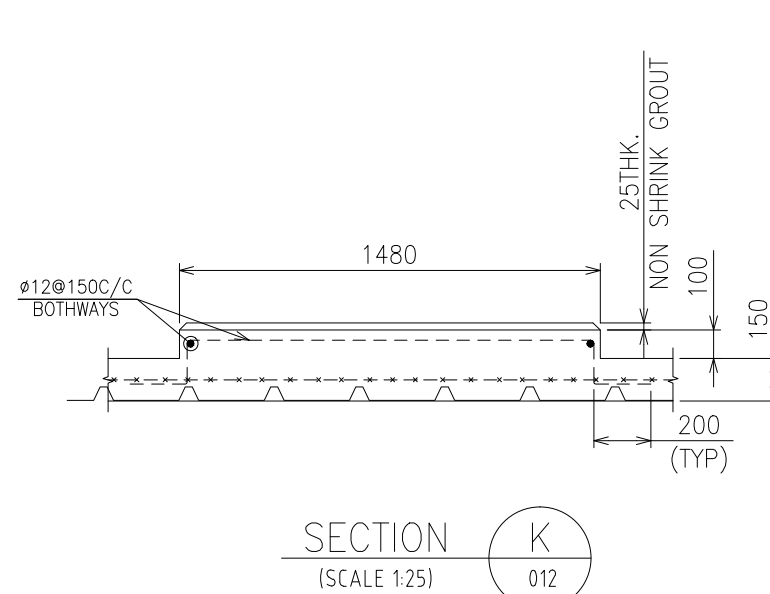
SECTION G
(SCALE 1:25)



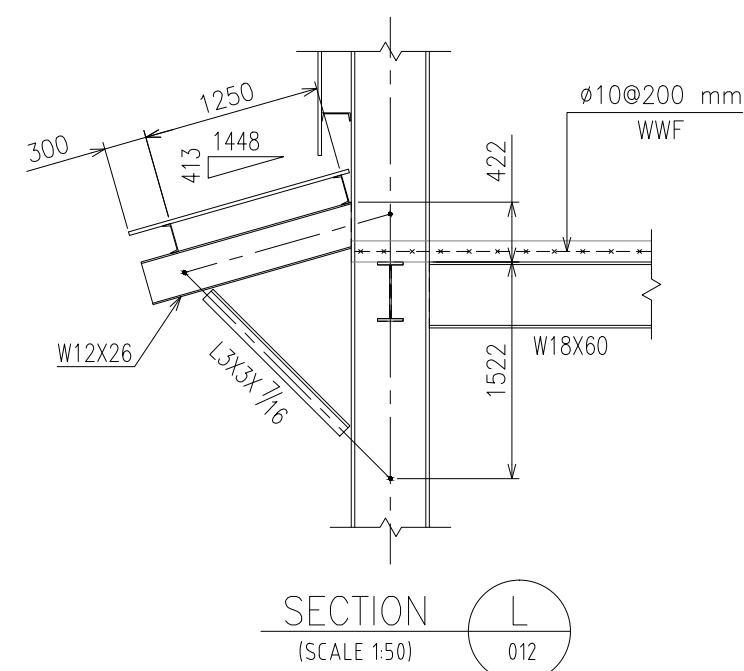
SECTION H
(SCALE 1:25)



SECTION J
(SCALE 1:25)



SECTION K
(SCALE 1:25)



SECTION L
(SCALE 1:50)

GENERAL NOTES

- ALL DIMENSIONS ARE IN MILLIMETRES AND LEVELS ARE IN METRES.
- FOR GENERAL NOTES, MATERIALS SPECIFICATION AND LEGEND REFER DRAWING NO. J8371-4-23-009

03-08-15	01	REVISED AS PER CLIENT COMMENTS	APG	AMA	RAR
13-07-15	00	ISSUED FOR APPROVAL	APG	AMA	RAR
DATE	REV	DESCRIPTION	DRN	CKD	APP

CLIENT:

UNIVERSAL CHEMICAL COMPANY

دار الرياض
DAR AL RIYADH
MASDAR SYSTEMS & SOLUTIONS
P.O. BOX 20753, AL KHOBAR 31952
TEL: 8494-111 FAX: 849-3707 E-MAIL: masdar@daralriyadh.com

PROJECT TITLE:
**SYNTHETIC DETERGENT POWDER
PRODUCTION PLANT**

DRAWING TITLE :
**SABIZ TOWER
STRUCTURAL ELEVATION ON GRID 10A/10B'**

BY	DATE	PROJECT NO:	REF NO:
DRN/CADD	APG	01-03052015	SCALE : 1:100
CHECKED	AMA	DRAWING NO.:	REV.
APPROVED		J8371-4-23-020	01

J8371-4-23-020-R01